

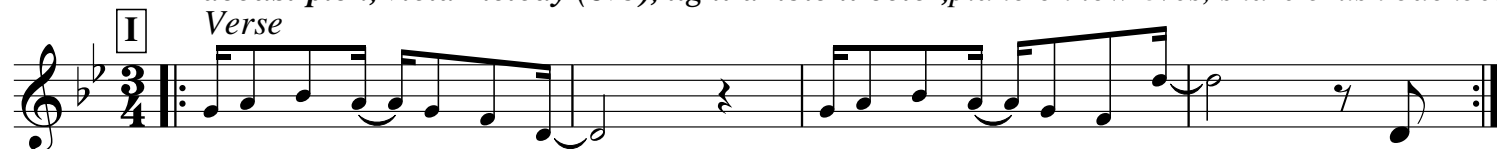
My Savior Left His Throne Above

B \flat

Rock

acoust pick, viola melody (8vb), light ambient color, piano on low 8ves, snare brush backbeat (no

Verse



1. My
(2. He)
(3. He)
(4. When)

B \flat

E \flat

B \flat

E \flat

B \flat

Gm

F

V1: as intro V2 V3: FULL V4: just acoust, ambience



Sav - ior left his throne a - bove, ex - changed his wealth for po - ver - ty; He
felt the storms of hu - man pain, he felt temp - ta - tion's whel - ming seas, He
kept his Fath - er's ev - ery word; the Law he fol - lowed per - fect - ly; So
Je - sus left his heav'n - ly home, his face was set on Cal - va - ry, The



took my hate, and gave his love, all this and more he did for me. Be -
felt the tears of sor - row's rain, all this and more he felt for me. Be -
all God's plea - sure he se - cured, all this and more he earned for me. Be -
steep - est hill he climbed a - lone, all this and more he did for me. Be -

E \flat

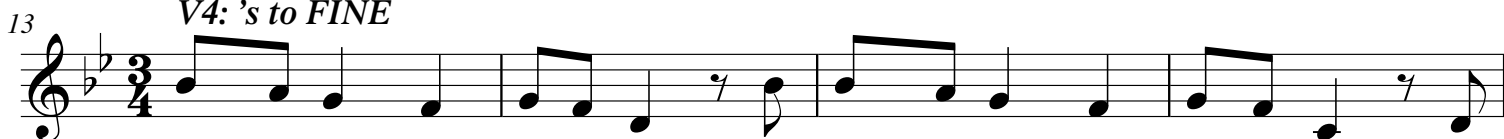
Gm

E \flat

F

viola (V1-3: play intro melody over 4 bars; modify final note to E)

V4: 's to FINE



- cause he chose the low - ly way, and bowed be - fore his Fath - er's will, I
- cause he knows my ev - ery strife, and is ac - quain - ted with my grief, I
- cause his right - eous life is mine, and all his mer - its now I own, I
- cause he died once for all time, and bore the curse of death and hell, Fi -

17 B \flat B \flat /D E \flat Gm E \flat B \flat D7 Gm



can with all as - sur - ance say, "My God is near and loves me still. My
can't be sha - ken in this life: The Friend of Sin - ners walks with me; the
am a child of God on high; I am a - dop - ted, loved, and known; I
- nal for - give - ness here is mine; So it is fin - ished, all is well; yes,

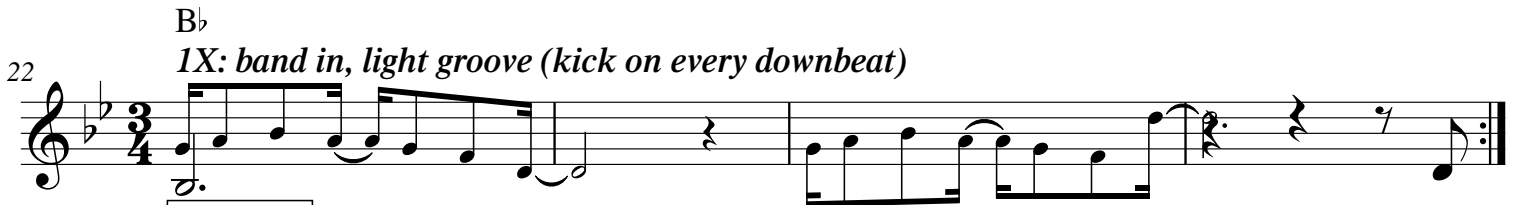
21 E \flat B \flat F



God is near and loves me
Friend of Sin - ners walks with
am a - dop - ted, loved, and
it is fin - ished, all is

22 B \flat

1X: band in, light groove (kick on every downbeat)



LAST X: FINE

still."

me.

known.

well.

2. He
3. He
4. When